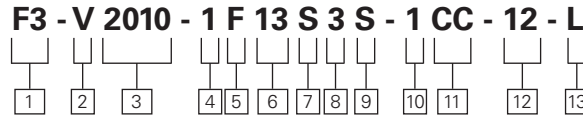


# Double Pumps

## Model Codes



**1 Special Seals**

Omit if not required.

See page 25 for information on seals.

**2 Vane pump**

**3 Series**

2010 or 2020

**4 Mounting**

**1** – 2-bolt flange, 4.00” pilot (standard)  
**6** – 2-bolt flange, 3.25” pilot (optional)  
 See page 23 for optional foot bracket kits.

**5 Inlet port connections**

**F** – 4-bolt flange 1.50 dia. (V2010)  
 2.00 dia. (V2020)

**6 Shaft-end pump ring size**

(delivery at 1200 rpm & 100 psi)

<b>6</b> - 6 USgpm	<b>11</b> - 11 USgpm
<b>7</b> - 7 USgpm	<b>12</b> - 12 USgpm
<b>8</b> - 8 USgpm	<b>13</b> - 13 USgpm
<b>9</b> - 9 USgpm	

**7 No. 1 outlet port (shaft end)**

**S** – 1.062-12 UN-2B thd.

**8 Cover-end pump ring size**

(delivery at 1200 r/inm and 100 psi)

<b>1</b> – 1 USgpm	} V2010
<b>2</b> – 2 USgpm	
<b>3</b> – 3 USgpm	
<b>4</b> – 4 USgpm	
<b>5</b> – 5 USgpm	
<b>6</b> – 6 USgpm	} V2020
<b>7</b> – 7 USgpm	
<b>8</b> – 8 USgpm	
<b>9</b> – 9 USgpm	
<b>11</b> – 11 USgpm	

**9 No. 2 outlet port (cover end)**

**S** – .750-16 St. Thd. (V2010)  
 1.062–12 St. Thd. (V2020)

**10 Shafts**

**1** – Straight keyed  
**11** – Splined

**11 Position of outlet**

(Viewed from cover end of pump)

**V2010**

With no. 1 outlet opposite inlet  
**AA** – No. 2 outlet 135° CCW from inlet  
**AB** – No. 2 outlet 45° CCW from inlet  
**AC** – No. 2 outlet 45° CW from inlet  
**AD** – No. 2 outlet 135° CW from inlet

With no. 1 outlet 90° CCW from inlet  
**BA** – No. 2 outlet 135 CCW from inlet  
**BB** – No. 2 outlet 45 CCW from inlet  
**BC** – No. 2 outlet 45 CW from inlet  
**BD** – No. 2 outlet 135 CW from inlet

With no. 1 outlet in line with inlet  
**CA** – No. 2 outlet 135° CCW from inlet  
**CB** – No. 2 outlet 45° CCW from inlet  
**CC** – No. 2 outlet 45° CW from inlet  
**CD** – No. 2 outlet 135° CW from inlet

With no. 1 outlet 90° CW from inlet  
**DA** – No. 2 outlet 135° CCW from inlet  
**DB** – No. 2 outlet 45° CCW from inlet  
**DC** – No. 2 outlet 45° CW from inlet  
**DD** – No. 2 outlet 135° CW from inlet

**V2020**

With no. 1 outlet opposite inlet  
**AA** – No. 2 outlet opposite inlet  
**AB** – No. 2 outlet 90° CCW from inlet  
**AC** – No. 2 outlet in line with inlet  
**AD** – No. 2 outlet 90° CW from inlet

With no. 1 outlet 90° CCW from inlet  
**BA** – No. 2 outlet opposite inlet  
**BB** – No. 2 outlet 90° CCW from inlet  
**BC** – No. 2 outlet in line with inlet  
**BD** – No. 2 outlet 90° CW from inlet

With no. 1 outlet inline with inlet  
**CA** – No. 2 outlet opposite inlet  
**CB** – No. 2 outlet 90° CCW from inlet  
**CC** – No. 2 outlet in line with inlet  
**CD** – No. 2 outlet 90° CW from inlet

With no. 1 outlet 90° CW from inlet  
**DA** – No. 2 outlet opposite inlet  
**DB** – No. 2 outlet 90° CCW from inlet  
**DC** – No. 2 outlet in line with inlet  
**DD** – No. 2 outlet 90° CW from inlet

**12 Design**

**12** – V2010 series  
**30** – V2020 series  
 Subject to change.

**13 Shaft rotation**

(Viewed from shaft end of pump)

**L** – Left hand for counterclockwise  
 Omit for right hand

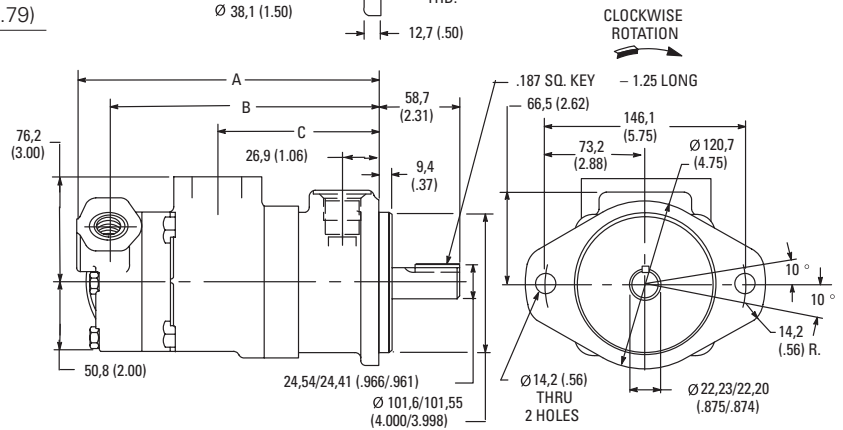
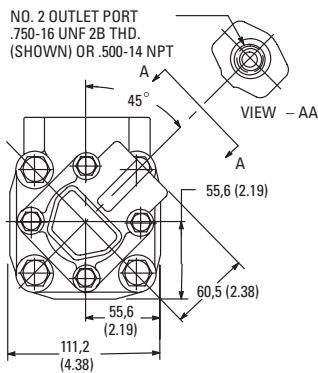
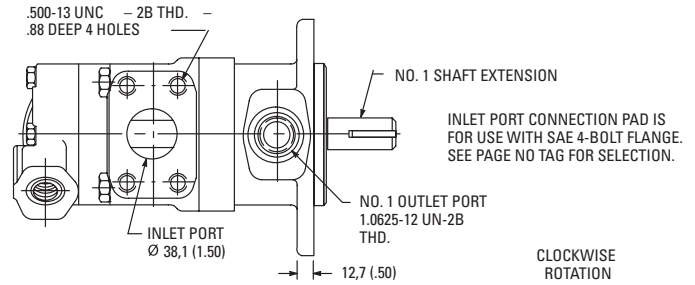
# Double Pumps

V2010 Dimensions

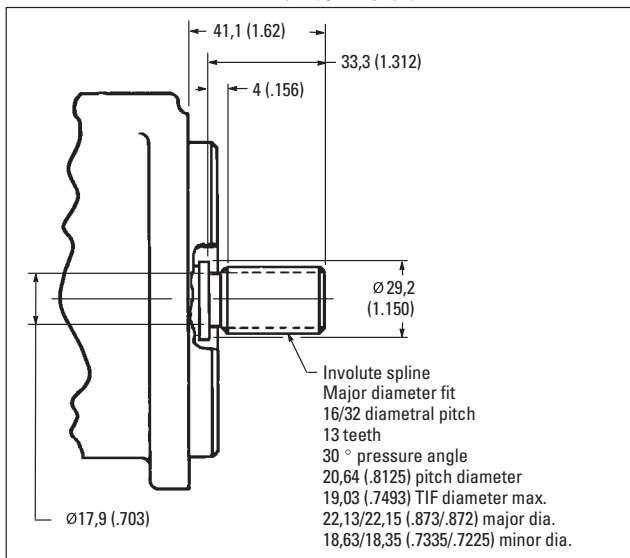
Millimeters (inches)

See page 23 for foot mounting dimensions.

Rated Delivery, gpm @ 1200 rpm & 100 psi		Dimensions		
Shaft end	Cover end	A	B	C
7,8 or 9	1, 2 or 3	213,1 (8.39)	189,2 (7.45)	113,3 (4.46)
7,8 or 9	4 or 5	219,5 (8.64)	195,6 (7.70)	113,3 (4.46)
7,8 or 9	6 or 7	224,5 (8.84)	200,7 (7.90)	113,3 (4.46)
11	1, 2 or 3	218,2 (8.59)	194,3 (7.65)	118,1 (4.65)
11	4 or 5	224,5 (8.84)	200,7 (7.90)	118,1 (4.65)
11	6 or 7	229,6 (9.04)	205,7 (8.10)	121,7 (4.79)
12 or 13	1, 2 or 3	221,7 (8.73)	197,9 (7.79)	121,7 (4.79)
12 or 13	4 or 5	227,8 (8.97)	204,0 (8.03)	121,7 (4.79)
12 or 13	6 or 7	232,9 (9.17)	209,0 (8.23)	121,7 (4.79)



Number 11 shaft

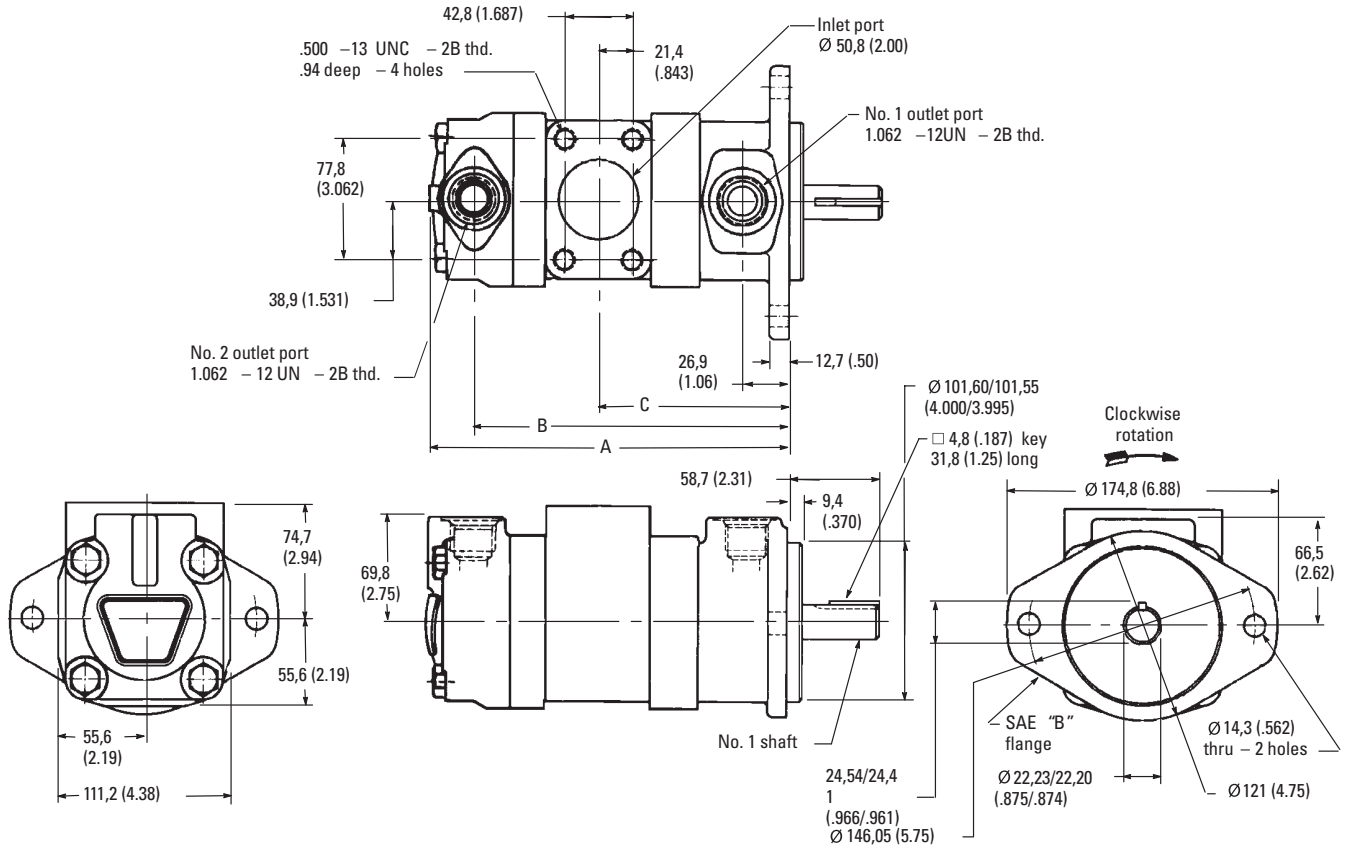


# Double Pumps

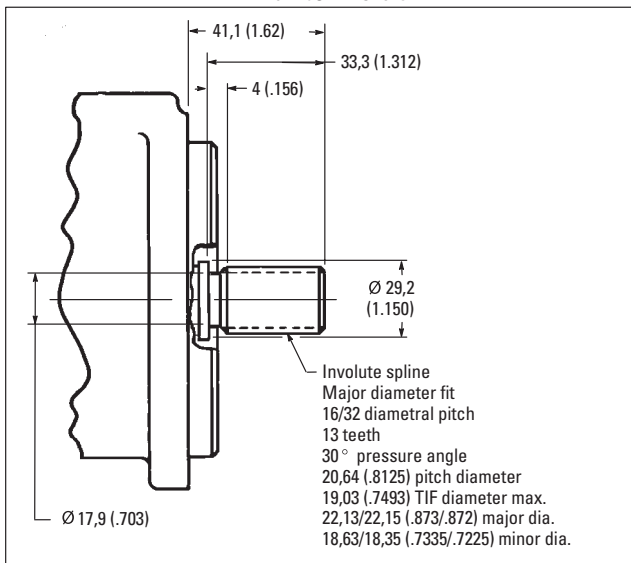
V2020 Dimensions

Millimeters (inches)

See page 23 for foot mounting dimensions.



Number 11 shaft

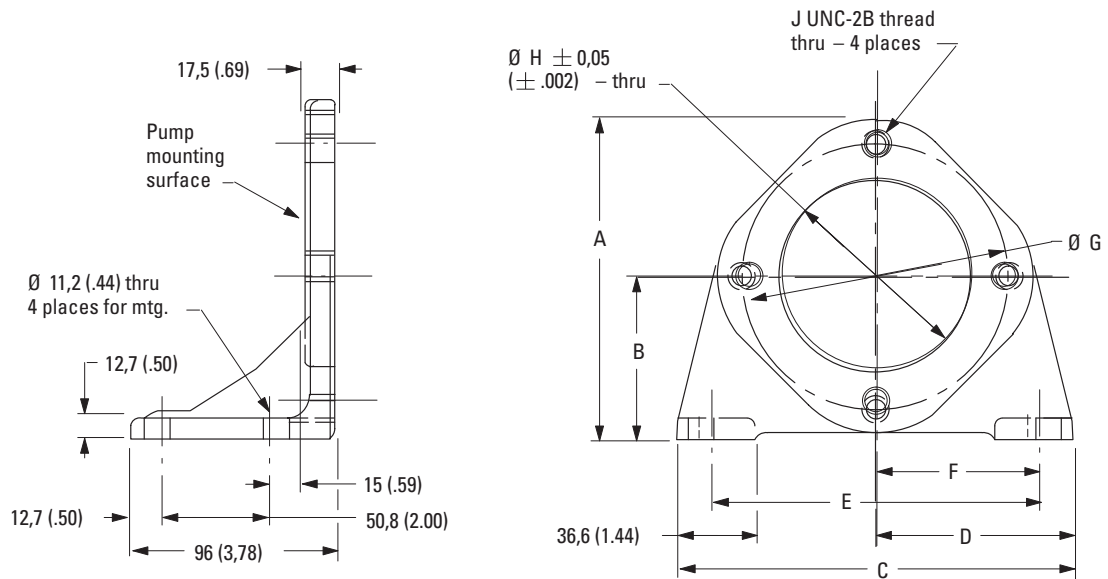


Ring size		Dimensions		
Shaft end	Cover end	A	B	C
7, 8 or 9	6	213,6 (8.41)	187,7 (7.39)	114 (4.49)
7, 8 or 9	7, 8 or 9	220 (8.66)	194 (7.64)	114 (4.49)
11	6	218,7 (8.61)	192,8 (7.59)	119,1 (4.69)
11	7, 8 or 9	225 (8.86)	199,1 (7.84)	119,1 (4.69)
11	11	229,9 (9.05)	204 (8.03)	119,1 (4.69)
12 or 13	6	222,2 (8.75)	196,3 (7.73)	122,4 (4.82)
12 or 13	7, 8 or 9	228,3 (8.99)	202,4 (7.97)	122,4 (4.82)
12 or 13	11	233,4 (9.19)	207,5 (8.17)	122,4 (4.82)

# Foot Bracket Kit

## Dimensions

Millimeters (inches)



Note: Each kit includes screws for mounting pump to bracket.

Model	A	B	C	D	E	F	$\varnothing G$	$\varnothing H$	J
FB-A-10	134,9 (5.31)	69,8 (2.75)	152,4 (6.00)	76,2 (3.00)	127,0 (5.00)	63,5 (2.50)	106,37 (4.188)	82,63 (3.253)	.375-16
FB-B-10	180,8 (7.12)	92,2 (3.63)	171,4 (6.75)	85,7 (3.38)	146,0 (5.75)	73,1 (2.88)	146,0 (5.75)	101,68 (4.003)	.500-13