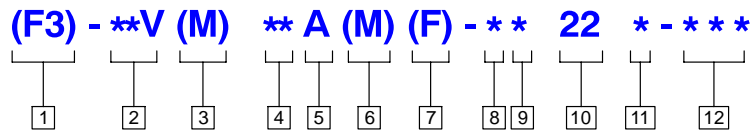


# Single Pump Model Code

## Model Code



### 1 F3 - Viton Seals

Omit if not required

### 2 Series Designation

20V - 7 to 45 cm<sup>3</sup>/r (0.43 to 2.78 in<sup>3</sup>/r)  
 25V - 33 to 67 cm<sup>3</sup>/r (2.0 to 4.1 in<sup>3</sup>/r)  
 35V - 81 to 121 cm<sup>3</sup>/r (4.9 to 7.4 in<sup>3</sup>/r)  
 45V - 138 to 193 cm<sup>3</sup>/r (8.4 to 11.6 in<sup>3</sup>/r)

### 3 Pilot Designation

Omit - Standard pilot

S - SAE per ISO 3019/1 (SAE J744)  
 (N/A on 20V pump).

M - Metric per ISO 3019/2 100A2HW  
 codes (N/A on 20V pump).

### 4 Geometric Displacement

Rated capacity (USgpm) at 1200 rpm,  
 6,9 bar (100 psi)

Frame Size	Code (USgpm)	cm <sup>3</sup> /r	in <sup>3</sup> /r
20V	2	7	0.43
	5	18	1.10
	8	27	1.67
	9	30	1.85
	11	36	2.22
	12	40	2.47
	14	45	2.78
25V	10	33	2.01
	12	39	2.47
	14	45	2.78
	17	55	3.39
	21	67	4.13
35V	25	81	4.94
	30	97	5.91
	35	112	6.83
	38	121	7.37
	45V	42	138
45		147	8.95
50		162	9.85
60		193	11.75

### 5 Port Connections

A - SAE 4-bolt flange

### 6 Port Connection Modifier

Omit - Inch thread port connection  
 (4-bolt flange)

M - Metric port connection  
 (4-bolt flange - N/A on 20V)

### 7 Mounting

Omit - Flange mounting  
 F - Foot mounting

### 8 Shafts

#### Std. Pilot Shafts

Model	Str. Key	HD Str. Key	Spline
20V	1	N/A	151
25V thru 45V	1	86	11

#### "S" SAE Pilot & "M" Metric ISO Pilot Shafts

Model	Str. Key	HD Str. Key	Metric Key	Str. Spline
25VS - 45VS	202	203	N/A	297
25VM - 45VM	N/A	N/A	292N	N/A

### 9 Outlet Postions

(Viewed from cover end of pump)

A - Opposite inlet port

B - 90° CCW from inlet

C - Inline with inlet

D - 90° CW from inlet

### 10 Design

### 11 Rotation

(Viewed from shaft end of pump)

L - Left hand for counterclockwise

R - Right hand for clockwise

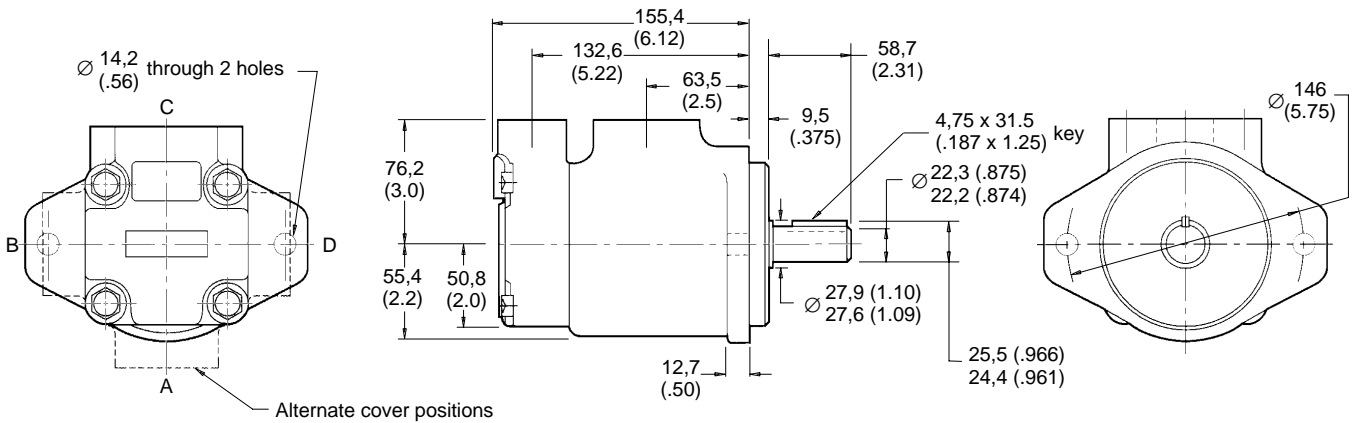
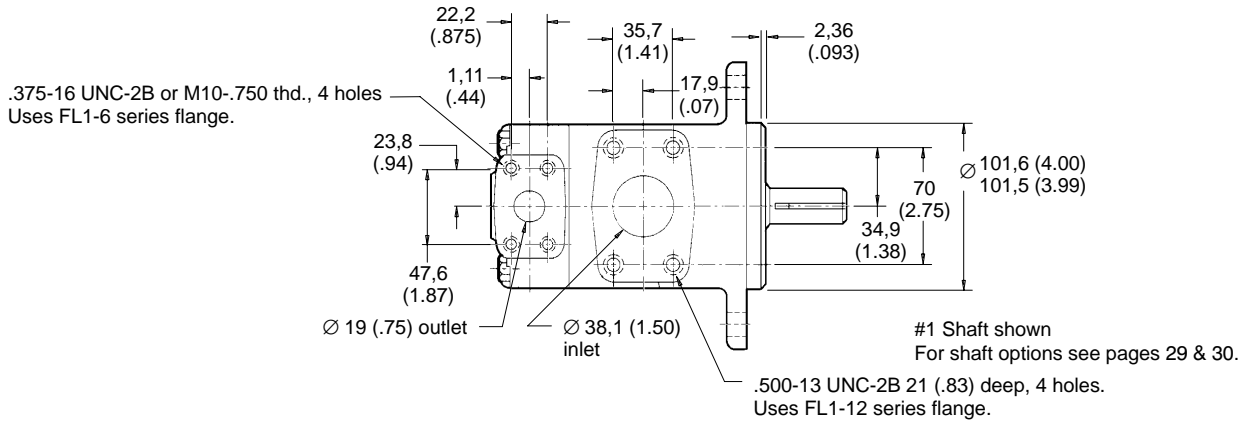
### 12 Special Suffix

167 - 2-bolt, 5.00" dia. pilot  
 (25V only - N/A for VS or VM  
 models)

Note: For options other than listed in the model code, i.e. shafts, ports, displacements and mountings, contact your Vickers representative.

# 20V Installation Dimensions

## 20V Series Single Pumps Millimeters (inches)

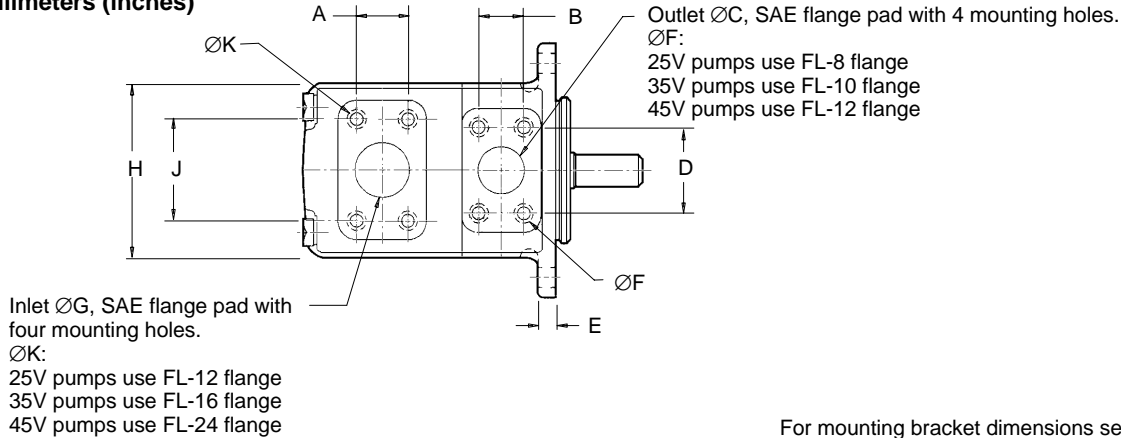


For mounting bracket dimensions see page 34.

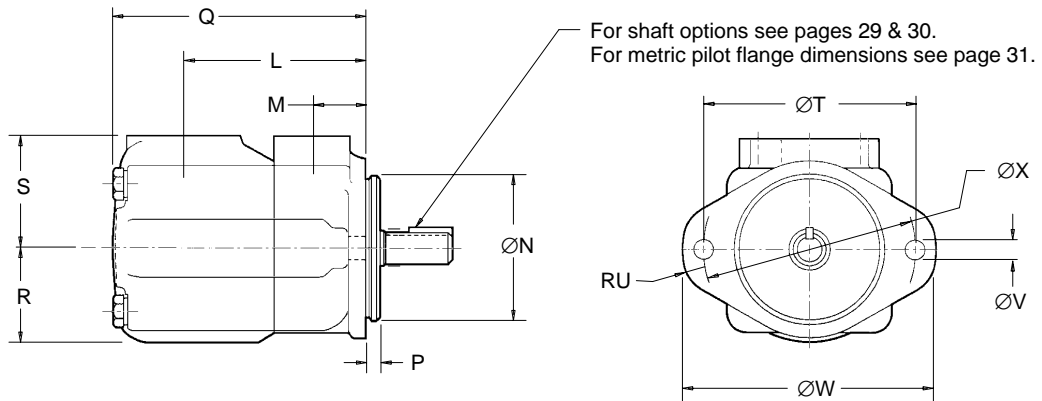
# 25V, 35V, 45V Installation Dimensions

## 25V, 35V and 45V Single Pumps

Millimeters (inches)



For mounting bracket dimensions see page 34.



Model	$\varnothing F$ x full thread depth, 4 holes	$\varnothing K$ x full thread depth, 4 holes
25V(*)-**AM	M10 x 19,0 (0.75) deep	M12 x 23,8 (0.94) deep
25V(*)-**A	$\frac{3}{8}$ "-16UNC-2B x 19 (0.75) deep	$\frac{1}{2}$ "-13UNC-2B x 23,8 (0.94) deep
35V(*)-**AM	M12 x 22,3 (0.88) deep	M12x22,3 (0.88) deep
35V(*)-**A	0.43"-14UNC-2B x 22,3 (0.88)deep	$\frac{1}{2}$ "-13UNC-2B x 22,3 (0.88) deep
45V(*)-**AM	M12 x 23,8 (0.94) deep	M16 x 30 (1.18) deep
45V(*)-**A	$\frac{1}{2}$ "-13UNC-2B x 23,8 (0.94) deep	$\frac{5}{8}$ "-11UNC-2B x 30 (1.18) deep

Model	A	B	$\varnothing C$	D	E	$\varnothing G$	H	J	L	L for (**VS & **VM)	M	$\varnothing N$	P	P for (**VS)	P for (**VM)
25V	35,7 (1.41)	26,2 (1.03)	25,4 (1.00)	52,4 (2.06)	12,7 (0.50)	38,1 (1.50)	118 (4.62)	69,9 (2.75)	121 (4.76)	149 (5.88)	38,1 (1.50)	101,6 (4.00) 101,5 (3.99)	9,53 (0.38)	9,53 (0.38)	9,25 (.364)
35V	42,9 (1.69)	30,2 (1.19)	31,8 (1.25)	58,7 (2.31)	16 (0.63)	50,8 (2.00)	140 (5.50)	77,8 (3.06)	125,5 (4.94)	133,4 (5.25)	38,1 (1.50)	127,0 (5.00) 126,9 (4.99)	9,53 (0.38)	12,7 (0.50)	9,11 (.359)
45V	61,9 (2.43)	35,7 (1.41)	38,1 (1.50)	69,9 (2.75)	16 (0.63)	76,2 (3.00)	159 (6.25)	106,4 (4.19)	153 (6.03)	164 (6.44)	43 (1.69)	127,0 (5.00) 126,9 (4.99)	12,7 (0.50)	12,7 (0.50)	9,11 (.359)

Model	Q	Q for (**VS)	Q for (**VM)	R	S	$\varnothing T$	RU	$\varnothing V$	$\varnothing W$	$\varnothing X$
25V	162,1 (6.38)	171,7 (6.76)	171,7 (6.76)	63,5 (2.50)	76,2 (3.00)	146 (5.75)	14 (0.55)	14,2 (0.56)	175 (6.88)	121 (4.76)
35V	185 (7.28)	193 (7.59)	193 (7.59)	69,9 (2.75)	82,6 (3.25)	181 (7.13)	16 (0.63)	17,5 (0.69)	213 (8.38)	148 (5.83)
45V	216 (8.50)	226 (8.91)	226 (8.91)	82,6 (3.25)	93,7 (3.69)	181 (7.13)	16 (0.63)	17,5 (0.69)	213 (8.38)	148 (5.83)